

VersaBlue® XC Series Adhesive Melters

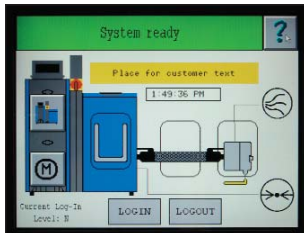
Nordson

50, 100 and 200 liter melters

VersaBlue XC Series melters provide precise, dependable hot melt adhesive delivery for high-consumption applications. A comprehensive selection of high-capacity pumps, delivering up to 118.7 cubic centimeters per revolution, supports demanding adhesive dispensing requirements. Melters accept up to eight single-stream or eight dual-stream metering spur-gear pumps with variable-speed AC motors. Modular design allows users to upgrade and retrofit configurable options on-site. A choice of control systems provides seamless integration into current production environments. These include a high-performance PC, Allen-Bradley® ControlLogix® PLC or Siemens® S7 PLC.

VersaBlue XC Series melters:

- Increase system flexibility
- Simplify system configuration and upgrades
- Maximize uptime
- Install quickly and easily



Single-point system operation integrates auxiliary temperature, motor and pressure controls to reduce complexity

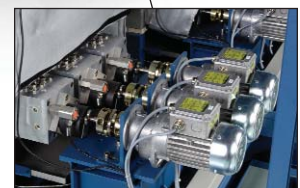
Grid and reservoir reduce adhesive degradation and maximize throughput



Open access provides quick and easy servicing



Quick-disconnect hose/gun power connectors simplify installation



Broad selection of pump sizes, including high capacity, matches production requirements

Specifications

Type of System	Release-coated grid and reservoir Spur-gear pump with variable AC motor	Ambient Temperature Range	0° to 50° C (32° to 122° F)
Number of Pumps	Up to 8 single-stream or 8 dual-stream	Temperature Control Stability	±1° C (2° F)
Maximum Pump Rate^{1,2}	1.4 to 541.3 kg/hr (3 to 1193.6 lb/hr)	Electrical Service³	200 to 240 VAC 3 phase 50/60 Hz 380 to 415 VAC-Y (3 phase N/PE) 50/60 Hz
Hose Outputs per Metered Stream	1	Maximum External Temperature Control Zones	52
Number of External Motor Controllers	Up to 1	Maximum Internal Pressure Sensors	16
Maximum Working Hydraulic Pressure	85 bars/8.5 MPa (1230 psi)	Maximum External Pressure Sensors	16
Operating Temperature Range	40° to 230° C (100° to 450° F)	Protection	IP 54

	50 L Tanks	100 L Tanks	200 L Tanks
Holding Capacity	50 L (3051 in³) 48.5 kg (104.7 lb)	100 L (6102 in³) 97 kg (213 lb)	200 L (12,204 in³) 94 kg (426 lb)
Throughput (per hour)¹	75 kg (165.4 lb)	150 kg (330 lb)	300 kg (660 lb)
Melt Rate (per hour)¹	50 kg (110.2 lb)	100 kg (220 lb)	200 kg (440 lb)
Melter Dimensions			
W x H x D mm (in.)	1460 x 2015 x 1250 (57.5 x 79.3 x 49.2)	1460 x 2015 x 1500 (57.5 x 79.3 x 59.1)	1460 x 2015 x 2400 (57.5 x 79.3 x 94.5)
Service/Installation Envelope			
W x H x D mm (in.)	1932 x 2244 x 1885 (76.1 x 88.3 x 74.2)	2182 x 2244 x 2135 (85.9 x 88.3 x 84.1)	2181 x 2244 x 3035 (85.9 x 88.3 x 119.5)
Weight Empty kg (lb)⁴	620 (1366.9)	820 (1807.8)	1470 (3240.8)
Maximum Melter Power (W)	43400	53400	98400

¹ Actual rates will vary depending on adhesive type, application parameters and input voltage.

² Range given is for maximum pump rate of various pumps available.

³ Permitted deviation from rated line voltage is ±10 percent.

⁴ Weight depends on melter configuration.

Allen-Bradley and ControlLogix are registered trademarks of Rockwell Automation, Inc. Siemens is a registered trademark of Siemens AG.



For more information, talk with your Nordson representative or contact your Nordson regional office.

United States

Dawsonville, Georgia
Telephone: (800) 727-7224
Facsimile: (706) 216-2981

Europe

Lüneburg, Germany
Telephone: (49) 4131-894-0
Facsimile: (49) 4131-894-149

Japan

Tokyo, Japan
Telephone: (81) 3-5762-2700
Facsimile: (81) 3-5762-2701

Asia/Australia/Latin America

Amherst, Ohio
Telephone: (440) 985-4496
Facsimile: (440) 985-1096

www.nordson.com



When you expect more.®